

## Veterans Memorial Building, Main Hall 301 Main Street

### Features:

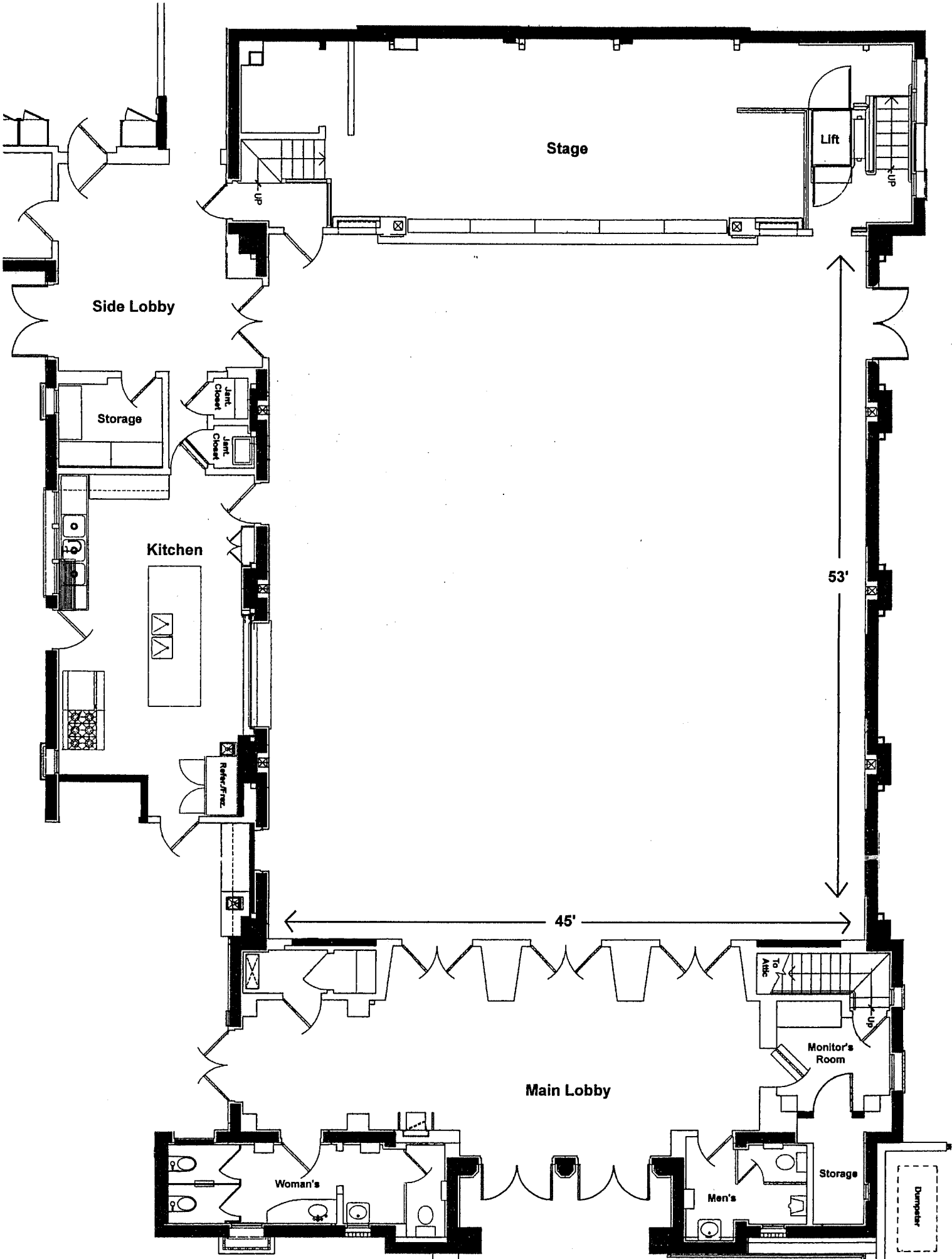
- Capacity: 220
- Available: Friday, 6:00pm-midnight  
Saturday, 10:00am-midnight  
Sunday, 10:00am-9:00pm
- Approximately 3,000 square feet
- Spanish Revival-style facility built in 1933, located downtown
- Catering Kitchen
- Raised Stage
- 220 folding black, padded chairs
- 30, 8-ft. rectangular tables
- Two, 4-ft. rectangular tables

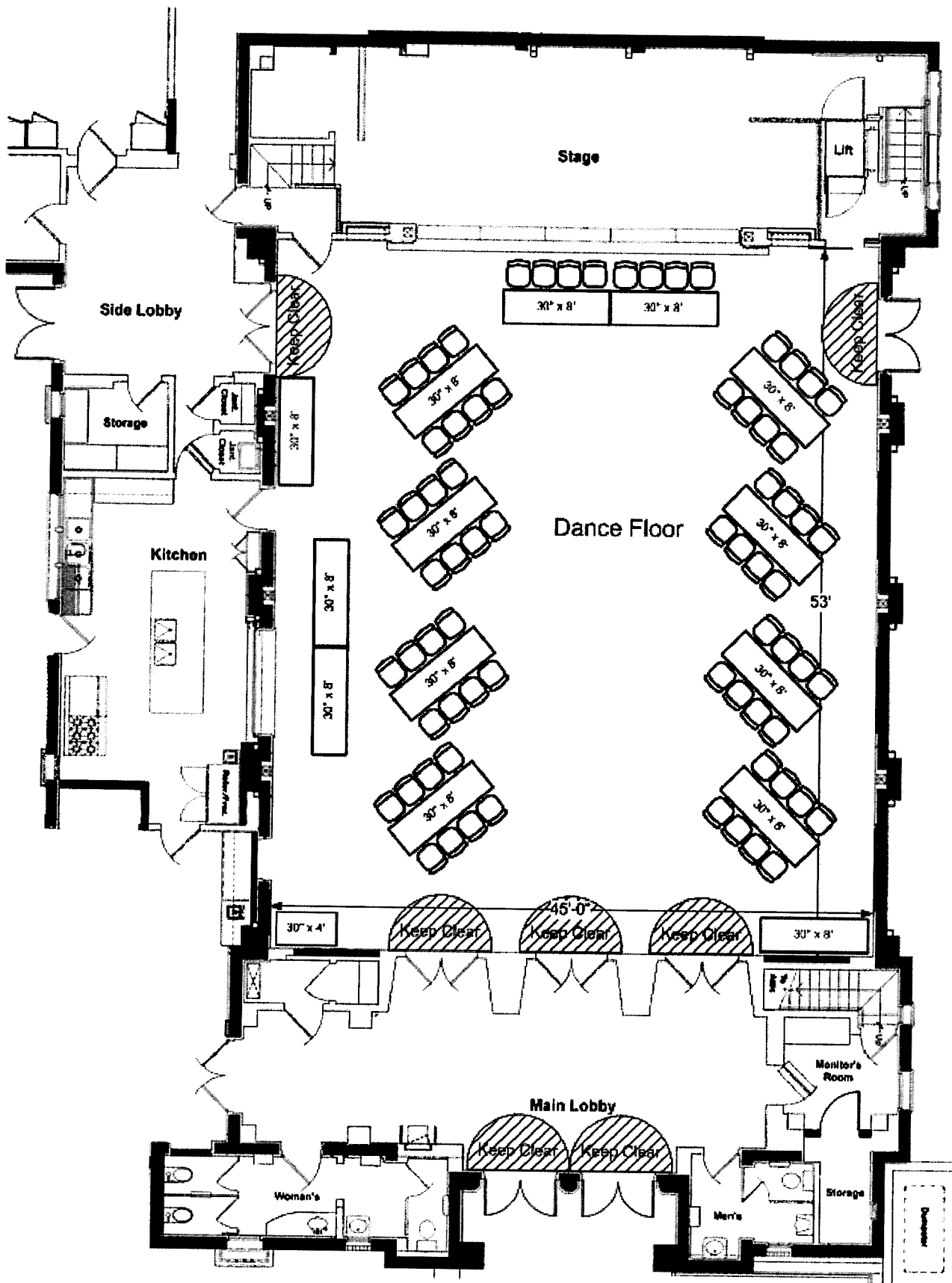


### Also Available:

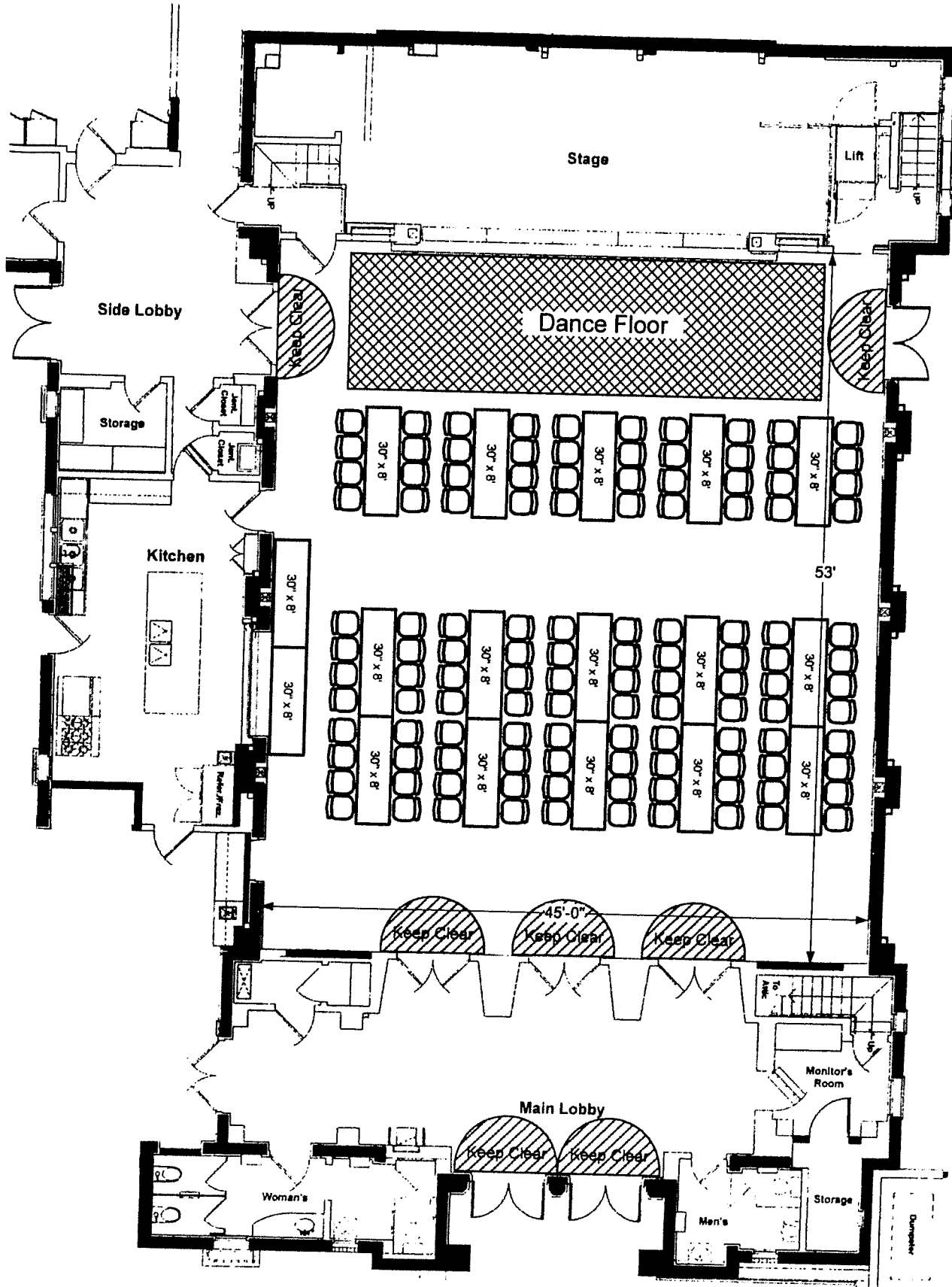
- Portable Bar: \$25
- Public Address System with Wireless Microphone: \$25
- LCD Projector: \$75
- Projector Screen: No Charge
- Podium: No Charge





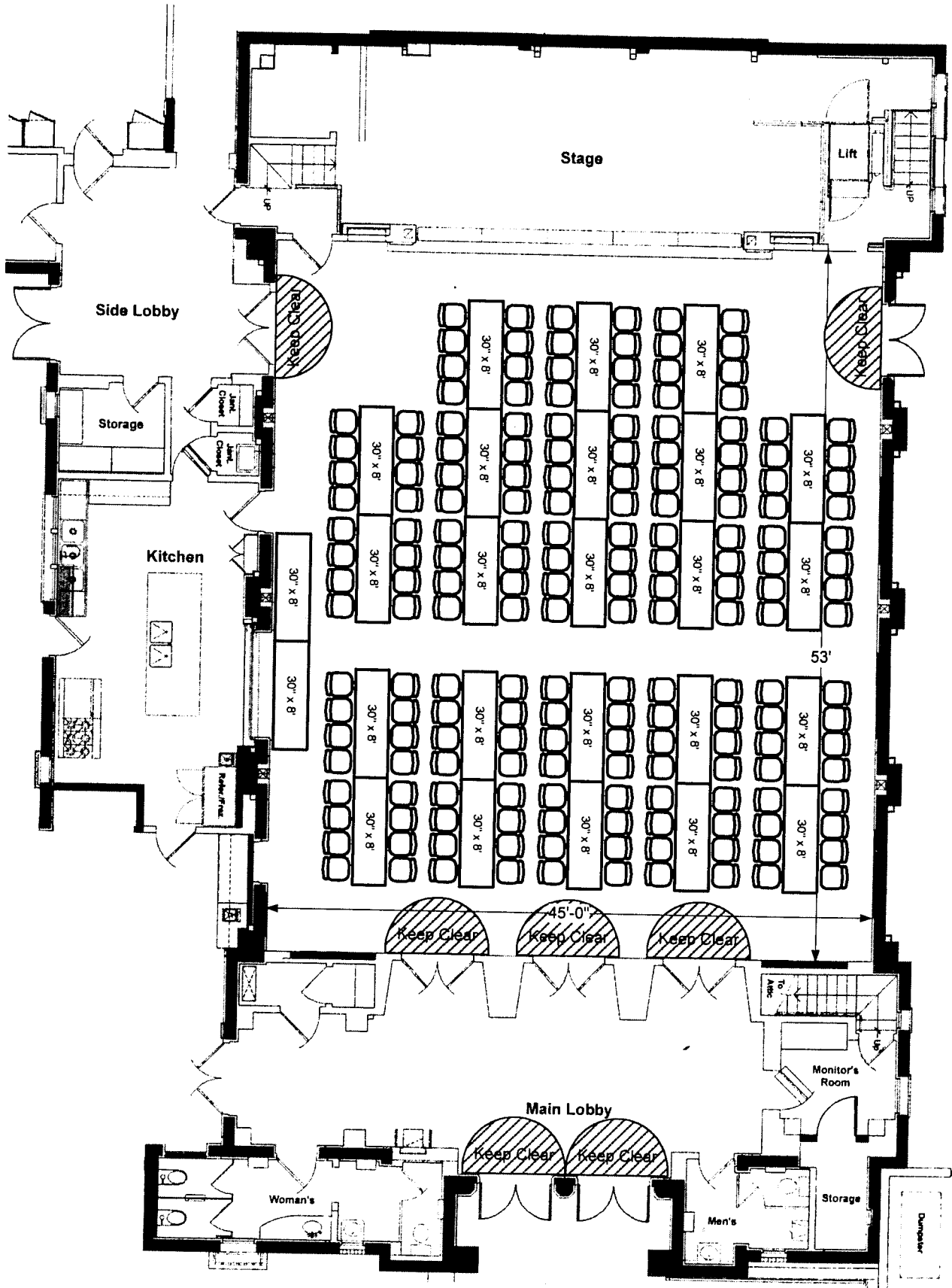


VETS HALL SET-UP SEATING FOR 72		SIZE	FSCM NO	DWG NO	REV
DRAWN	C. J. RIZZOLI				001



VETS HALL SET-UP  
SEATING FOR 120

DRAWN	C. J. RIZZOLI	SIZE	FSCM NO	DWG NO	REV
					001



<b>VETS HALL SET-UP SEATING FOR 184</b>				SIZE	FSCM NO	DWG NO	REV
DRAWN		C. J. RIZZOLI					001
ISSUED		2/23/10		SCALE	3/32" = 1' 0"	SHEET	2 OF 5